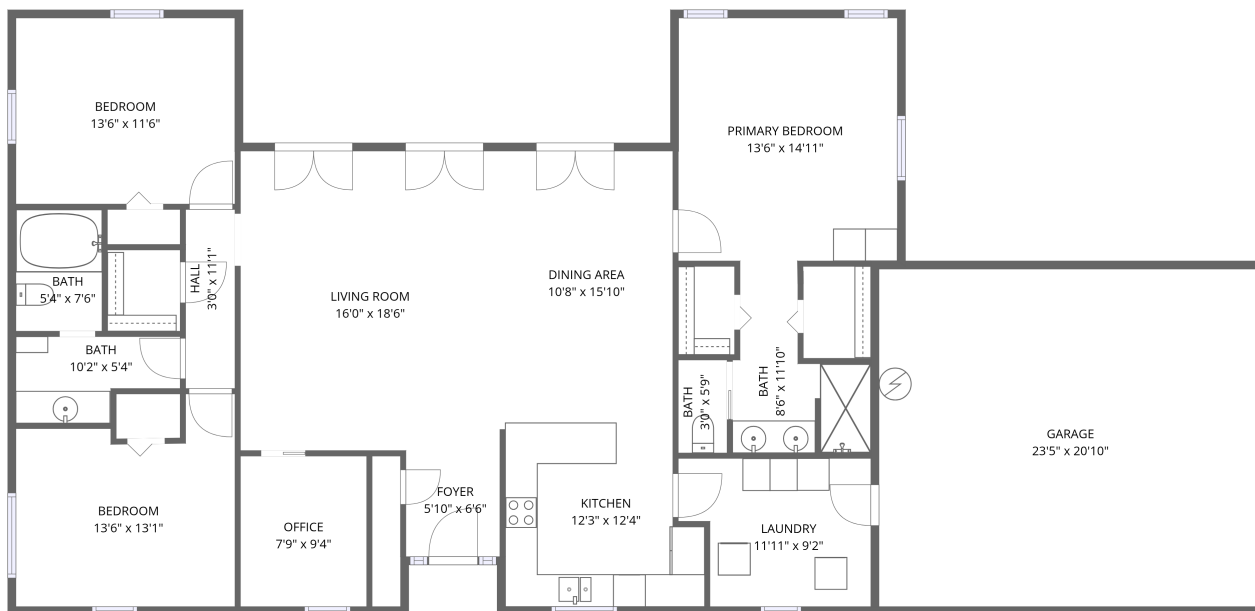


# Home data report

Plant City, Florida 33565, United States.



1st floor

**Total Area: 1695 sq. ft**

1st Floor: 1695 sq. ft

Excluded: Garage 488 sq. ft, Walls: 136 sq. ft

## Property summary

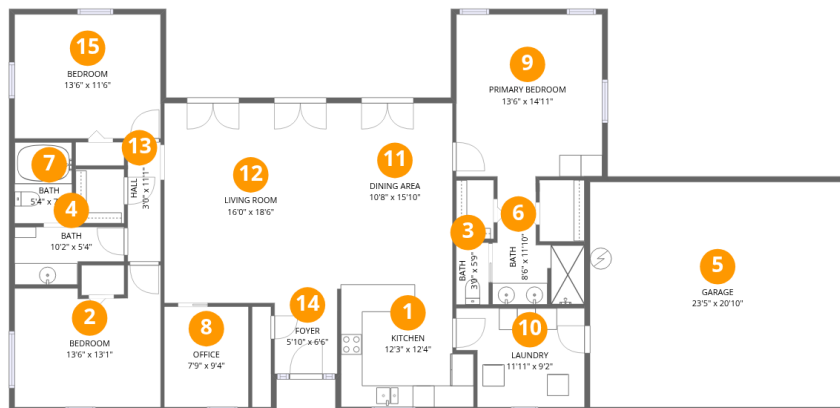
 **1** Floors

 **3** Bedrooms

 **2** Bathrooms

 **1** Garages

# Home data report



## Room dimensions

Floor 1

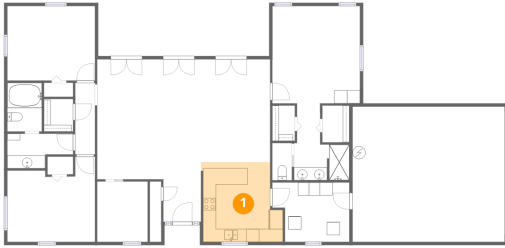
Total:1695sqft Excluded: 488sqft

#		Dimensions	sqft	Counted as living area
1	Kitchen	12'3" x 12'4"	151 sq. ft	Yes
2	Bedroom	13'6" x 13'1"	177 sq. ft	Yes
3	Bath	3'0" x 5'9"	17 sq. ft	Yes
4	Bath	10'2" x 5'4"	54 sq. ft	Yes
5	Garage	23'5" x 20'10"	487 sq. ft	No
6	Bath	8'6" x 11'10"	101 sq. ft	Yes
7	Bath	5'4" x 7'6"	40 sq. ft	Yes
8	Office	7'9" x 9'4"	72 sq. ft	Yes
9	Primary Bedroom	13'6" x 14'11"	202 sq. ft	Yes
10	Laundry	11'11" x 9'2"	109 sq. ft	Yes
11	Dining Area	10'8" x 15'10"	168 sq. ft	Yes

## Home data report

#		Dimensions	sqft	Counted as living area
12	Living Room	16'0" x 18'6"	296 sq. ft	Yes
13	Hall	3'0" x 11'1"	33 sq. ft	Yes
14	Foyer	5'10" x 6'6"	38 sq. ft	Yes
15	Bedroom	13'6" x 11'6"	155 sq. ft	Yes

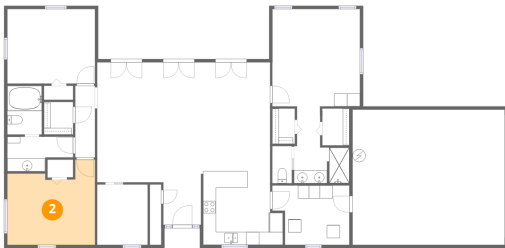
## 1 Floor 1 - Kitchen



Dimensions: 12'3" x 12'4"  
Area: 151 sq. ft  
Counted as living area: Yes

Heated: Yes  
Finished: Yes  
Enclosed: Yes  
Contiguous: Yes  
Permitted: Yes  
Wet space: No  
Addition: No  
Conversion: No

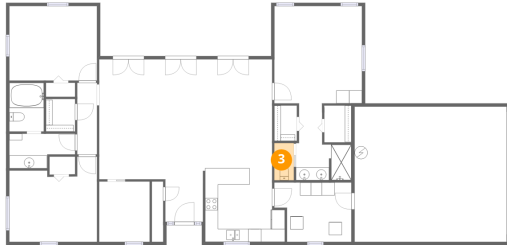
## 2 Floor 1 - Bedroom



Dimensions: 13'6" x 13'1"  
Area: 177 sq. ft  
Counted as living area: Yes

Heated: Yes  
Finished: Yes  
Enclosed: Yes  
Contiguous: Yes  
Permitted: Yes  
Wet space: No  
Addition: No  
Conversion: No

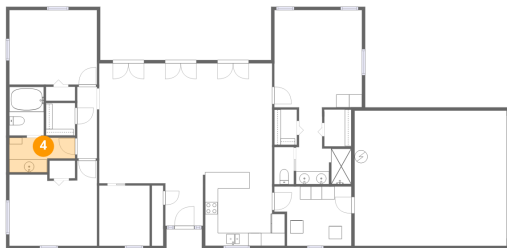
### 3 Floor 1 - Bath



Dimensions: 3'0" x 5'9"  
Area: 17 sq. ft  
Counted as living area: Yes

Heated: Yes  
Finished: Yes  
Enclosed: Yes  
Contiguous: Yes  
Permitted: Yes  
Wet space: No  
Addition: No  
Conversion: No

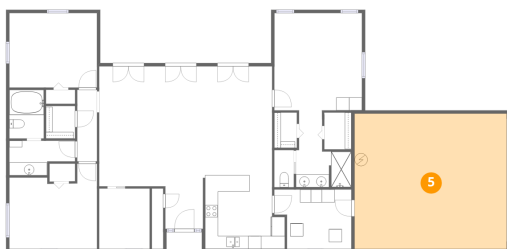
### 4 Floor 1 - Bath



Dimensions: 10'2" x 5'4"  
Area: 54 sq. ft  
Counted as living area: Yes

Heated: Yes  
Finished: Yes  
Enclosed: Yes  
Contiguous: Yes  
Permitted: Yes  
Wet space: Yes  
Addition: No  
Conversion: No

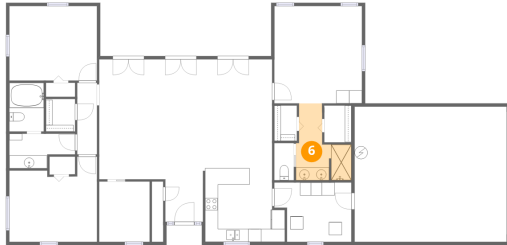
### 5 Floor 1 - Garage



Dimensions: 23'5" x 20'10"  
Area: 487 sq. ft  
Counted as living area: No

Heated: No  
Finished: No  
Enclosed: Yes  
Contiguous: Yes  
Permitted: Yes  
Wet space: No  
Addition: No  
Conversion: No

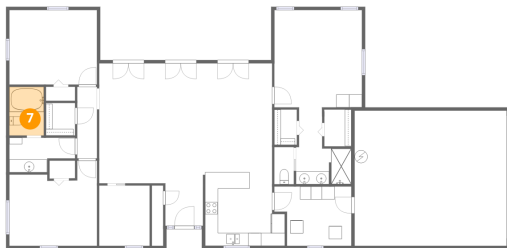
## 6 Floor 1 - Bath



Dimensions: 8'6" x 11'10"  
Area: 101 sq. ft  
Counted as living area: Yes

Heated: Yes  
Finished: Yes  
Enclosed: Yes  
Contiguous: Yes  
Permitted: Yes  
Wet space: Yes  
Addition: No  
Conversion: No

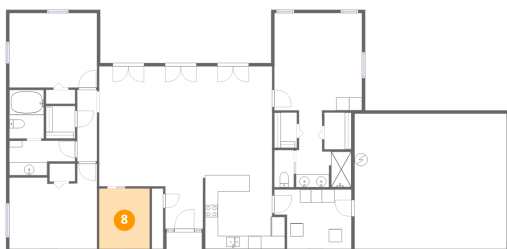
## 7 Floor 1 - Bath



Dimensions: 5'4" x 7'6"  
Area: 40 sq. ft  
Counted as living area: Yes

Heated: Yes  
Finished: Yes  
Enclosed: Yes  
Contiguous: Yes  
Permitted: Yes  
Wet space: Yes  
Addition: No  
Conversion: No

## 8 Floor 1 - Office



Dimensions: 7'9" x 9'4"  
Area: 72 sq. ft  
Counted as living area: Yes

Heated: Yes  
Finished: Yes  
Enclosed: Yes  
Contiguous: Yes  
Permitted: Yes  
Wet space: No  
Addition: No  
Conversion: No

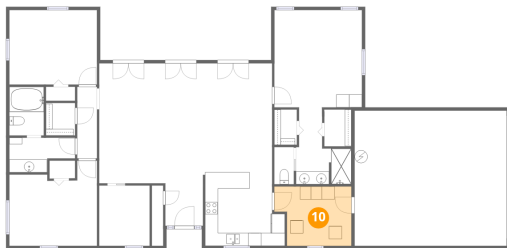
## 9 Floor 1 - Primary Bedroom



Dimensions: 13'6" x 14'11"  
Area: 202 sq. ft  
Counted as living area: Yes

Heated: Yes  
Finished: Yes  
Enclosed: Yes  
Contiguous: Yes  
Permitted: Yes  
Wet space: No  
Addition: No  
Conversion: No

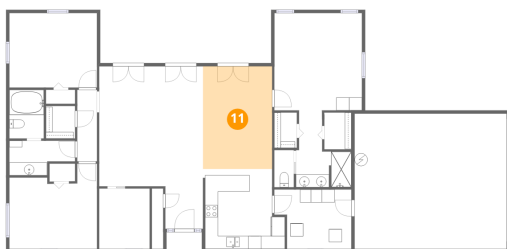
## 10 Floor 1 - Laundry



Dimensions: 11'11" x 9'2"  
Area: 109 sq. ft  
Counted as living area: Yes

Heated: Yes  
Finished: Yes  
Enclosed: Yes  
Contiguous: Yes  
Permitted: Yes  
Wet space: No  
Addition: No  
Conversion: No

## 11 Floor 1 - Dining Area



Dimensions: 10'8" x 15'10"  
Area: 168 sq. ft  
Counted as living area: Yes

Heated: Yes  
Finished: Yes  
Enclosed: Yes  
Contiguous: Yes  
Permitted: Yes  
Wet space: No  
Addition: No  
Conversion: No

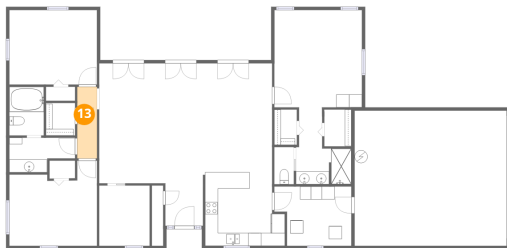
## 12 Floor 1 - Living Room



Dimensions: 16'0" x 18'6"  
Area: 296 sq. ft  
Counted as living area: Yes

Heated: Yes  
Finished: Yes  
Enclosed: Yes  
Contiguous: Yes  
Permitted: Yes  
Wet space: No  
Addition: No  
Conversion: No

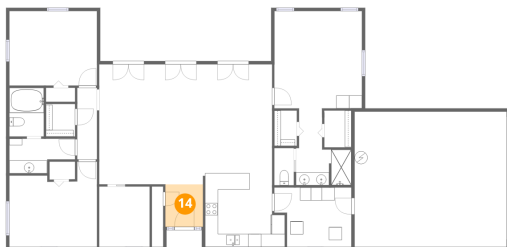
## 13 Floor 1 - Hall



Dimensions: 3'0" x 11'1"  
Area: 33 sq. ft  
Counted as living area: Yes

Heated: Yes  
Finished: Yes  
Enclosed: Yes  
Contiguous: Yes  
Permitted: Yes  
Wet space: No  
Addition: No  
Conversion: No

## 14 Floor 1 - Foyer

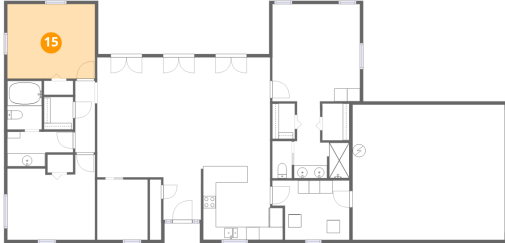


Dimensions: 5'10" x 6'6"  
Area: 38 sq. ft  
Counted as living area: Yes

Heated: Yes  
Finished: Yes  
Enclosed: Yes  
Contiguous: Yes  
Permitted: Yes  
Wet space: No  
Addition: No  
Conversion: No

## 15 Floor 1 - Bedroom

---



**Dimensions:** 13'6" x 11'6"  
**Area:** 155 sq. ft  
**Counted as living area:** Yes

**Heated:** Yes  
**Finished:** Yes  
**Enclosed:** Yes  
**Contiguous:** Yes  
**Permitted:** Yes  
**Wet space:** No  
**Addition:** No  
**Conversion:** No